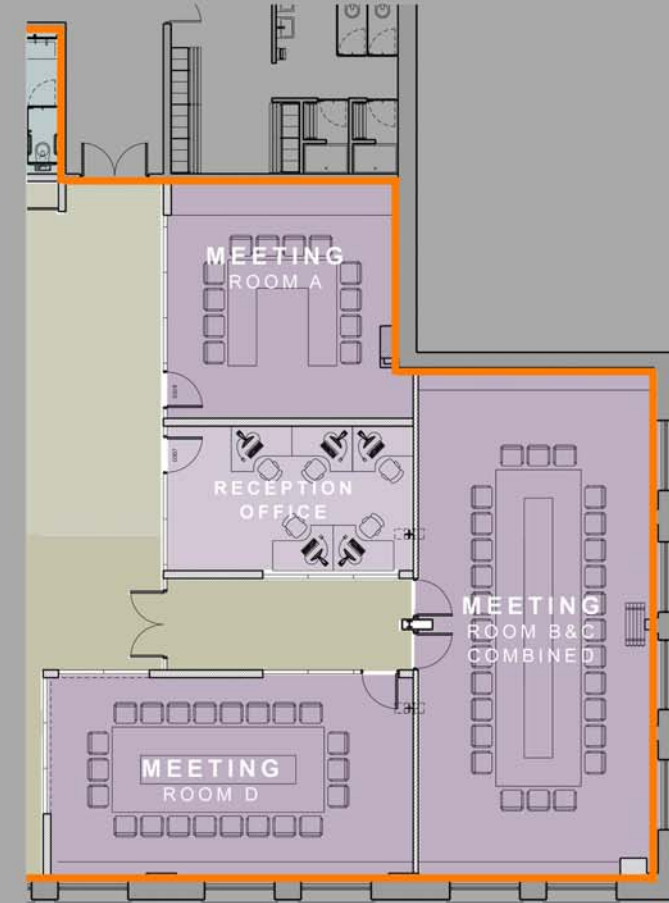
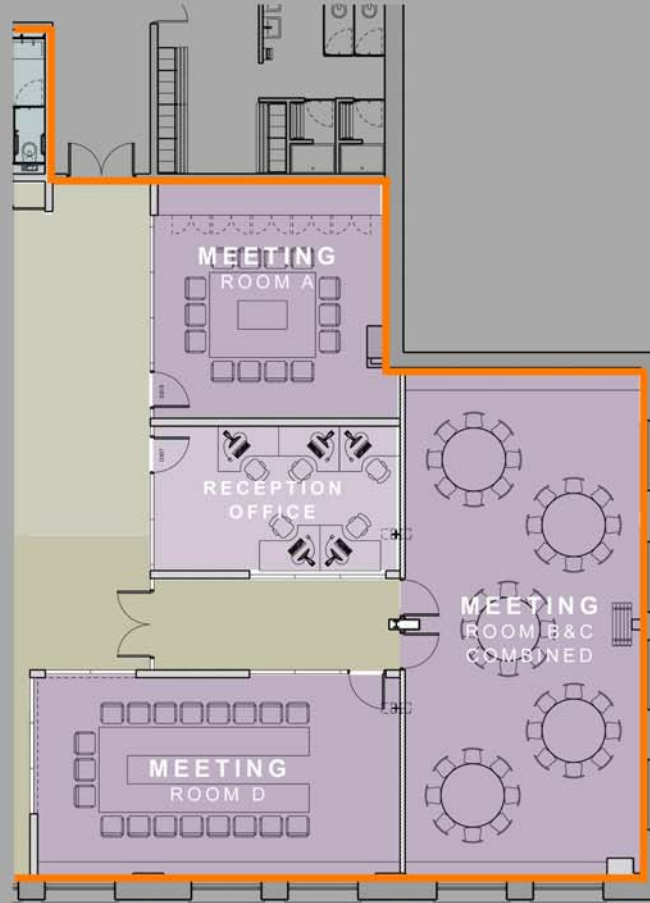
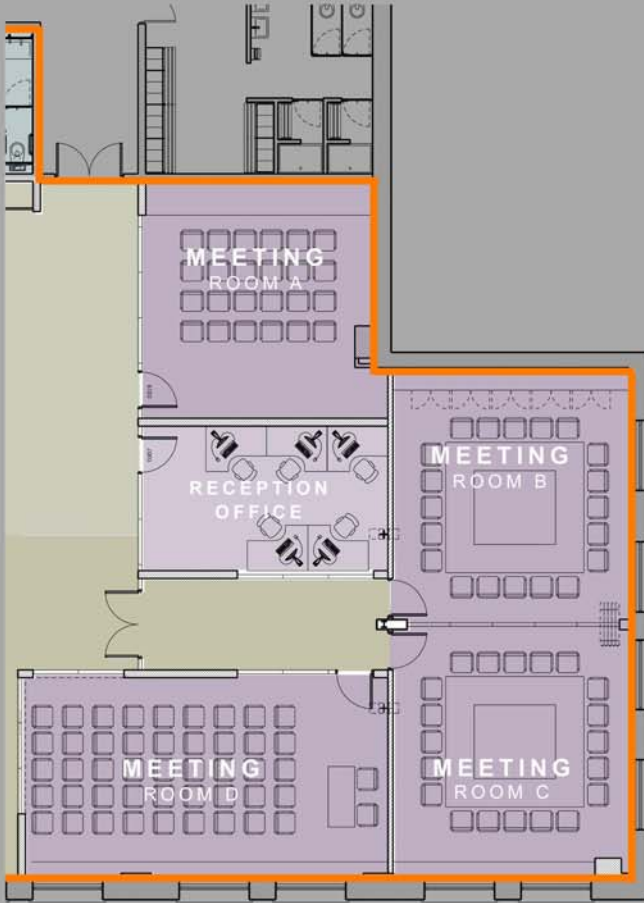


# CORPORATE SUITE

## MEETING ROOM LAYOUT OPTIONS



	Theatre	Cabaret	Boardroom	U Shaped
Room A	24	-	14	12
Room B	35	35*	20	15
Room C	35	35*	20	15
Room D	40	-	22	19

\* Capacity achieved when rooms B and C are combined into one.